

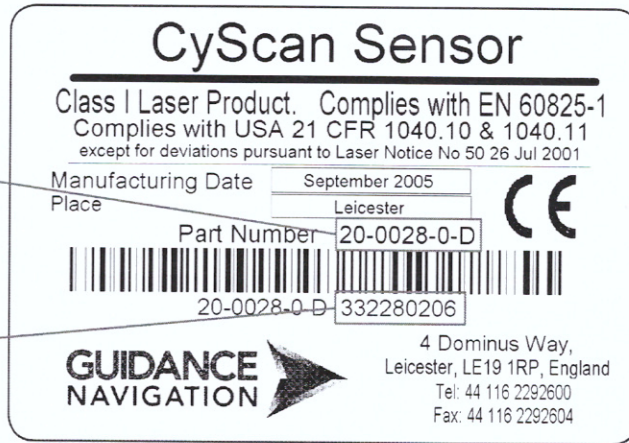
Serial numbers and software versions

Component Part Numbers and individual Serial Numbers are assigned to each component of CyScan. These can be found on product labels affixed to each unit. These numbers identify the hardware configuration and product revision and will be requested by Guidance Navigation in the event of an application service or support call to the company.

Product labels

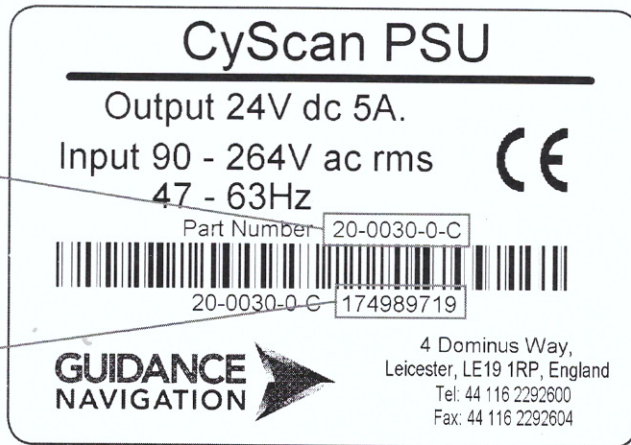
CyScan sensor part number

CyScan sensor serial number



CyScan PSU part number

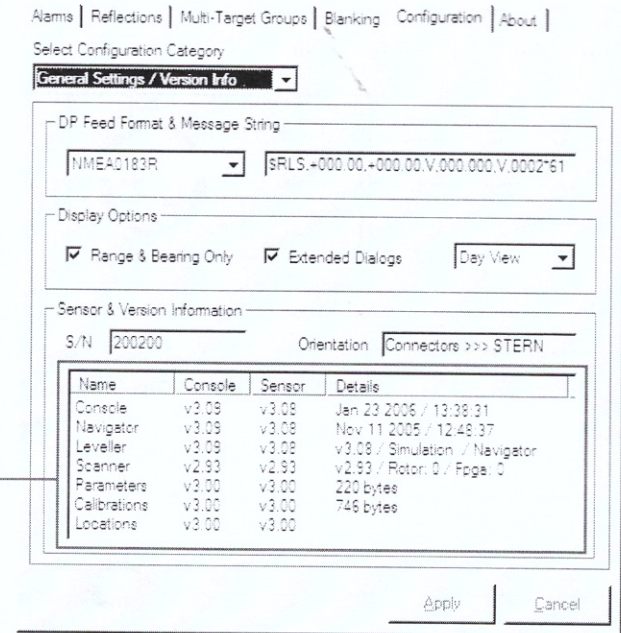
CyScan PSU serial number



Software version information

The *Configuration* page tab within the Property sheet provides version information about every software component within the Console application and the CyScan Sensor.

Software component version information

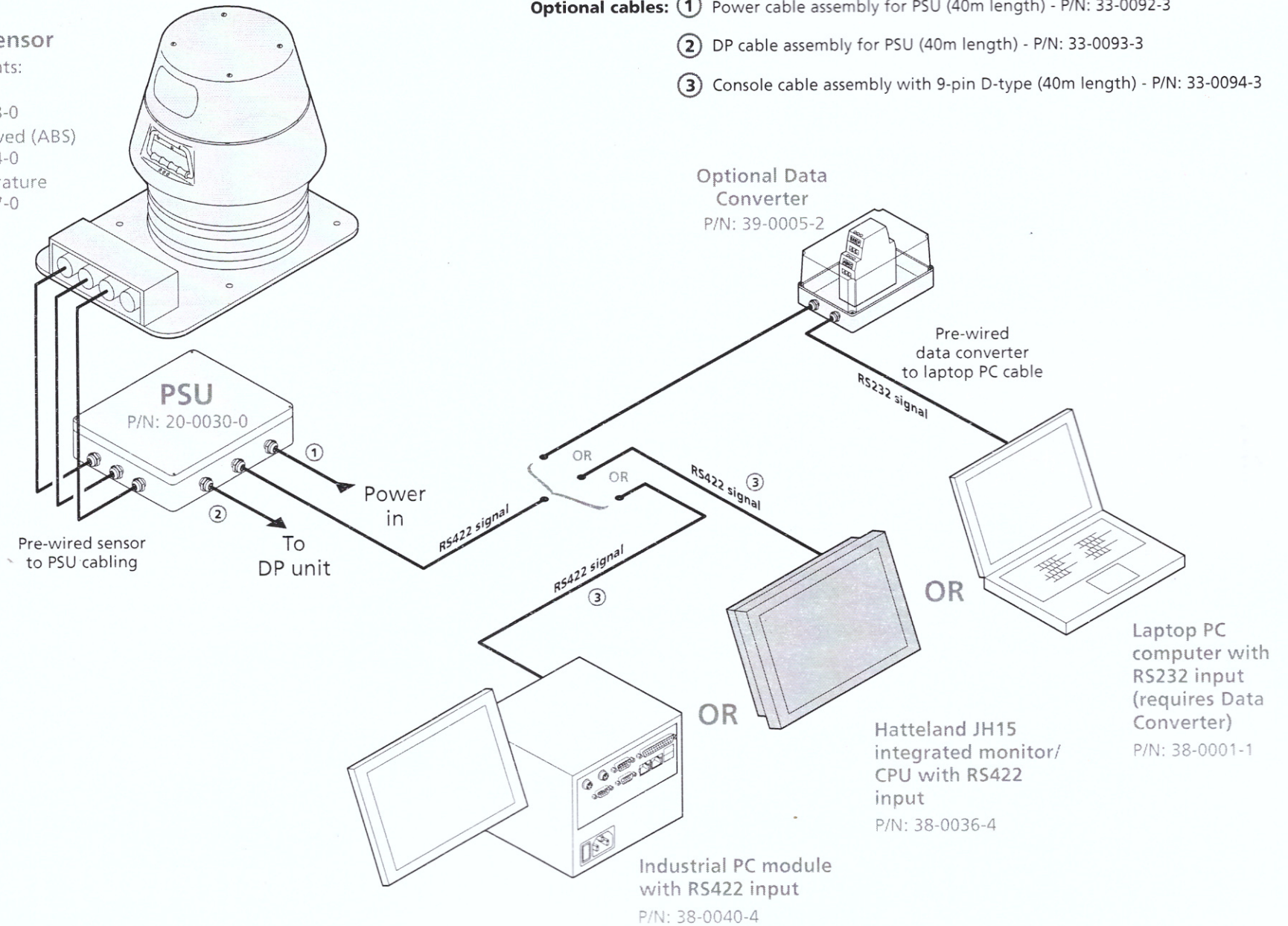


CyScan Components

A CyScan system is made up as shown:

CyScan Sensor

Three variants:
 Standard
 P/N: 20-0028-0
 Type Approved (ABS)
 P/N: 20-0064-0
 Low Temperature
 P/N: 20-0067-0



- Optional cables:**
- ① Power cable assembly for PSU (40m length) - P/N: 33-0092-3
 - ② DP cable assembly for PSU (40m length) - P/N: 33-0093-3
 - ③ Console cable assembly with 9-pin D-type (40m length) - P/N: 33-0094-3